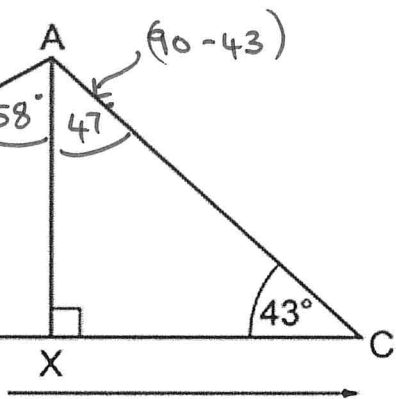


# the Day

Day 3

C.  
(C = 90°)



and angle ACB = 43°.

$$58^\circ + 47^\circ = 105^\circ$$

Not to scale

Using the Sine Rule

$$\frac{7.5}{\sin 105^\circ} = \frac{AB}{\sin 43^\circ}$$

$$\frac{7.5}{\sin 105^\circ} \times \sin 43^\circ = AB \Rightarrow AB = 5.295$$

Using Triangle ABX

$$\sin 32^\circ = \frac{AX}{5.295}$$

$$5.295 \times \sin 32^\circ = AX$$

$$\underline{\underline{AX = 2.8 \text{ cm to 1 d.p.}}}$$

Higher